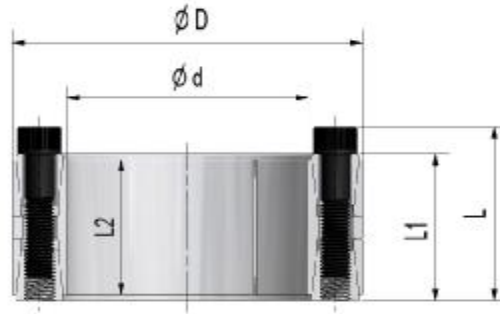
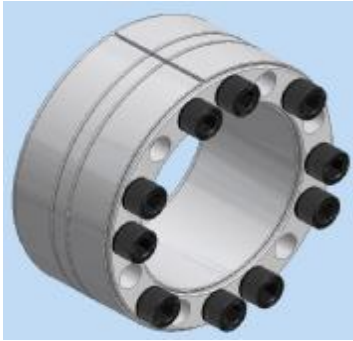


Locking assembly MAV 4071

rev. 0



Medium-high torque capacity
 Self-locking & self-centering
 Axial fixation of hub during tightening: yes
 Max tolerances: shaft h8; hub bore H8
 Shaft / hub bore max surface finish: $R_a \leq 3.2 \mu\text{m}$

Example of order: MAV4071 - 100 x 145 (d x D)

M_a : screw tightening torque
 M_t : transmissible torque ($F_{ax}=0$)
 F_{ax} : transmissible axial load ($M_t=0$)
 p_s : shaft pressure
 p_h : hub pressure

DIMENSIONS					SCREWS UNI 5931 - 12.9		PERFORMANCES				WEIGHT	
d	x	D	L ₂	L ₁	L	size	M _a	M _t	F _{ax}	P _s	P _h	kg
mm	mm	mm	mm	mm	mm		Nm	Nm	kN	N/mm ²	N/mm ²	
100	x	145	60	65	77	M 12	145	14400	288	191	132	3,7
110	x	155	60	65	77	M 12	145	15800	288	174	123	4,0
120	x	165	60	65	77	M 12	145	20700	346	191	139	4,4
130	x	180	68	74	86	M 12	145	28100	432	197	142	6,0
140	x	190	68	74	86	M 12	145	36300	518	219	161	6,5
150	x	200	68	74	86	M 12	145	38900	518	205	154	6,9
160	x	210	68	74	86	M 12	145	48400	605	224	171	7,2
170	x	225	75	81	95	M 14	230	60100	707	219	165	9,4
180	x	235	75	81	95	M 14	230	63600	707	207	159	10
190	x	250	88	94	108	M 14	230	74600	786	185	141	13
200	x	260	88	94	108	M 14	230	94300	943	211	162	14
220	x	285	98	104	120	M 16	355	109000	987	177	137	18
240	x	305	98	104	120	M 16	355	158000	1316	216	170	20
260	x	325	98	104	120	M 16	355	178000	1370	208	166	22
280	x	355	120	126	144	M 18	485	223000	1595	184	145	32
300	x	375	120	126	144	M 18	485	249000	1662	179	143	34
320	x	405	135	142	162	M 20	690	344000	2147	199	157	47
340	x	425	135	142	162	M 20	690	365000	2147	187	150	50
360	x	455	158	165	187	M 22	930	480000	2665	174	138	69
380	x	475	158	165	187	M 22	930	506000	2665	165	132	73
400	x	495	158	165	187	M 22	930	533000	2665	157	127	77
420	x	515	158	165	187	M 22	930	672000	3198	179	146	81
440	x	545	172	180	204	M 24	1200	818000	3716	186	150	101
460	x	565	172	180	204	M 24	1200	855000	3716	178	145	105
480	x	585	172	180	204	M 24	1200	951000	3964	182	149	110
500	x	605	172	180	204	M 24	1200	991000	3964	174	144	113
520	x	630	190	200	227	M 27	1600	1120000	4320	170	140	138
540	x	650	190	200	227	M 27	1600	1170000	4320	164	136	144
560	x	670	190	200	227	M 27	1600	1210000	4320	158	132	150
580	x	690	190	200	227	M 27	1600	1250000	4320	152	128	155
600	x	710	190	200	227	M 27	1600	1380000	4608	157	133	160

Information subject to change without prior notification, © MAV S.p.A.